

STANLIB MSCI World Index Feeder Fund

Fund information update at 31 December 2018

What is the fund's objective?

The objective of the STANLIB MSCI World Index Feeder Fund is to track the MSCI World Index ("the Index") as closely as possible, in South African Rand.

What does the fund invest in?

The fund is a feeder fund and as such it invests in the iShares Core MSCI World UCITS ETF. This underlying fund tracks the MSCI World Index and aims to replicate the performance of the index.

The MSCI World Index captures large and mid cap representation across 23 Developed Markets countries. With over 1600 constituents, the Index covers approximately 85% of the free float-adjusted market capitalisation in each country. The Index is rebalanced quarterly.

The fund may also hold a small portion in cash instruments and listed derivatives to effect efficient portfolio management.

What possible risks are associated with this fund?

Risks include general market conditions and market volatility, company specific risk, country specific risk, exchange rate risk, economic and political risk.

Risk rating

Conservative	Moderately conservative	Moderate	Moderately aggressive	Aggressive
--------------	-------------------------	----------	-----------------------	------------

What is the suggested investment period for this fund?

Minimum period

1 Month	6 Months	1 Year	3 Years	5 Years	7 Years
---------	----------	--------	---------	---------	---------

Who should consider investing in this fund?

- Investors who seek broad exposure to global equities in South African rand;
- Individual investors who seek global equity exposure without foreign exchange tax clearance;
- Investors who seek a low cost global equity fund;
- Investors who seek a simple and transparent investment process that invests in liquid, listed securities;
- Investors who seek equity market exposure that blends well with other investment strategies to reduce total costs and diversify risk;
- Investors who are willing to take a longer term view as this fund is aggressively risk profiled and investors should expect some volatility in the shorter term.

Income

Distribution Net income is calculated and accrued daily and is declared and distributed semi-annually.

Declaration 31 March, 30 September

General fund information

Manager(s) Ryan Basdeo
Size (NAV) R 16.77 million
Classification Global - Equity - General
Regulation 28 Does not apply

Index MSCI World Index (net)
Index info www.msci.com/world
Methodology Feeder
Rebalancing Quarterly

	Class A	Class B1
Launch	14 March 2018	14 March 2018
ISIN number	ZAE000254793	ZAE000255212
JSE code	SMWIF	SMWB1
Minimum investment requirements -		
Lump sum	R 5,000	N/A
Monthly	R 500	N/A

What are the costs to invest in this fund?

Maximum charges including VAT

	Class A	Class B1
Initial fee (manager)	0.000%	0.000%
Initial fee (adviser)	0.000% - 3.450%	0.000%
Annual fee	0.345%	0.236%
Performance fee	N/A	N/A
Adviser fee	1.150%	1.150%

Annual fee – this is a service charge (% based) applicable to each class of a fund, that is levied on the value of your portfolio and includes the fund management fee and administration fee. The fee also includes other charges such as audit, custody and index provider fees that are normally additional permissible deductions. Annual fees are calculated and accrued daily and recovered monthly from the income awaiting distribution in the fund.

Adviser fee - this is the maximum annual service fee (% based) an adviser can charge on the value of your portfolio. It is calculated and accrued daily and recovered monthly by means of a redemption of your units. It is not included in the **Annual fee**.

Cost ratios (annual) including VAT as at 30 September 2018

	Class A	Class B1
Based on period from:	14/03/2018	14/03/2018
Total Expense	0.55%	0.44%
Transaction Costs	0.12%	0.12%
Total Investment Charge	0.67%	0.56%
1 Year Total Expense	0.55%	0.44%

Total Expense (TER): This ratio shows the charges, levies and fees relating to the management of the portfolio and is expressed as a percentage of the average net asset value of the portfolio, calculated over the period shown and annualised to the most recently completed quarter. A higher TER does not necessarily imply a poor return, nor does a low TER imply a good return. The current TER should not be regarded as an indication of future TERs.

Transaction Costs (TC): This ratio shows the percentage of the value of the fund incurred as costs relating to the buying and selling of the fund's underlying assets. TC are a necessary cost in administering the fund and impacts fund returns. It should not be considered in isolation as returns may be impacted by many other factors over time including market returns, the type of fund, investment decisions of the investment manager and the TER.

Total Investment Charges (TIC): This ratio is simply the sum of the TER and TC, showing the percentage of the value of the fund incurred as costs relating to the investment of the fund. It should be noted that performance figures account for all costs included in the TIC ratio, so you should not deduct the TIC from performance figures, the performance is already net of the TIC.

The TER, TC & TIC cannot be determined accurately for portfolios/portfolio classes that are not yet 1 year old because of the short life span of the portfolio/portfolio class. Calculations in this instance are based on actual data where possible and best estimates where actual data is not available.

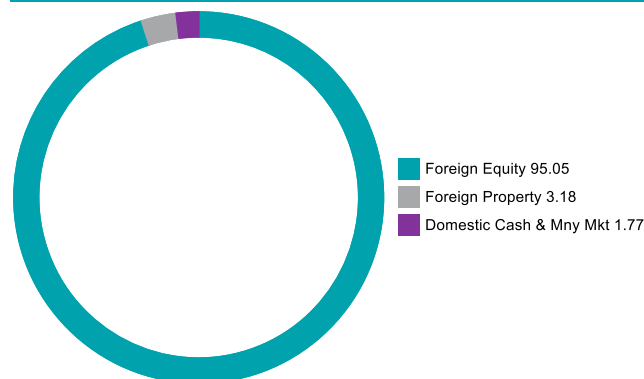
Monthly update at 31 December 2018

Holdings

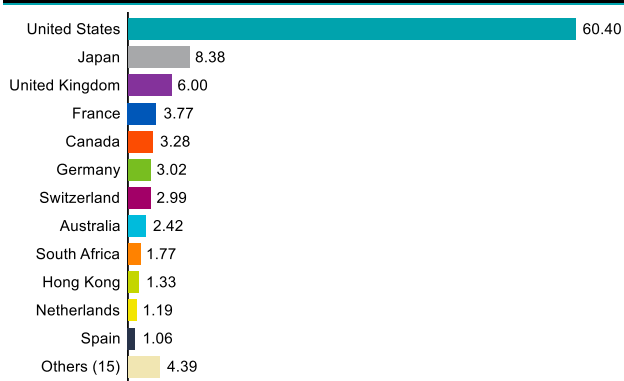
Holdings (%)

iShares Core MSCI World UCITS ETF	98.71
Domestic Cash	1.77
Foreign Cash	-0.48

Asset allocation (look through) (%)



Country allocation (look through) (%)



Top Equity holdings (look through) (%)

Apple Inc	2.09
Microsoft Corp	2.03
Amazon Com Inc	1.71
Johnson & Johnson	0.95
Jpmorgan Chase & Co	0.90
Alphabet Inc Class C	0.89
Facebook Class A Inc	0.87
Alphabet Inc Class A	0.86
Exxon Mobil Corp	0.79
Berkshire Hathaway Inc Class B	0.73

Performance and Income

Class A Launch: 14 March 2018

Class B1 Launch: 14 March 2018

Benchmark: MSCI World Index (net)

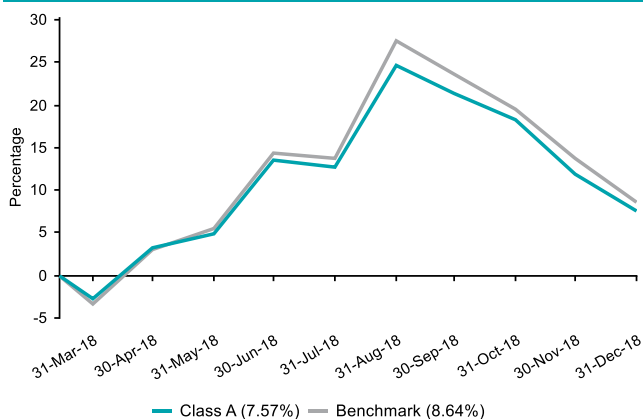
Returns (%)	1m	3m	6m	9m	Launch
Class A					
Class	-3.88	-11.37	-5.22	10.48	7.57
Rank/Out of	32/62	17/60	17/58	17/58	9/58
Sector Average	-3.68	-13.04	-7.54	6.62	2.31
Benchmark	-4.51	-12.07	-4.94	12.40	8.64
Class B1					
Class	-3.87	-11.35	-5.16	10.71	7.85

Returns (%) shown are cumulative for all periods shorter than or equal to 1 year and annualised for all periods greater than 1 year.

Amount declared (cents per unit)

	Class A	Class B1
In last 12 months	0.00	0.00
In 2017	0.00	0.00

Cumulative performance (%) from Launch



Quarterly update at 31 December 2018

Who are the investment managers?

STANLIB Asset Management (Pty) Ltd, FSP 719, an authorised Financial Services Provider under the Financial Advisory and Intermediary Services Act 2002, manage the investments of the fund.

The fund is run by the STANLIB Index Investments team which specialises in the manufacture of index and factor products for individual and institutional investors. Investors who seek a simple, transparent and low-cost investment solution can invest in index products that meet their financial goals.



Ryan Basdeo

MBA (Wits), BCom (Taxation), Registered Securities Trader
Portfolio manager

After beginning his career as a financial accountant in the employee benefits industry, Ryan joined STANLIB Asset Management in their Institutional Pricing team in 2008. He got experience in the Offshore Trades Processing team from 2010, before moving on to Alternative Investments as market maker for the ETFs and executing trades for the index-tracking funds, as well as assistance with portfolio management. He was appointed a Portfolio Manager in 2017. Ryan has a BCom in Taxation degree, is a JSE Registered Securities Trader, as well as a Registered Bond Trader and has been awarded a MBA from Wits Business School.

Fund review

The Fund performed in line with the Feeder Fund and the Index over the quarter.

Market overview

During 2018, the S&P 500 marked its longest bull run in August 2018. However, a severe correction in October reminded us that we are closer to the end of the cycle than the beginning and that investors should be prepared for heightened volatility. The year was also marked a transition from the era of easy money by major central banks, into gradually tighter monetary policy. For the full year 2018, MSCI SA lost -24.3%, well behind MSCI EM (-14.2%) and MSCI World (-8.9%) in dollar terms. ZAR has lost -13.7% against the dollar. In ZAR terms, the total return of FTSE/JSE All Share lost -8.5% whilst bonds (ALBI) and cash (STEF1) gained 7.7% and 7.3% respectively. Property (PCAP) lost -27.06%.

Looking ahead

Against the backdrop of strong US economic growth, there is potential for the trade conflict directed from the US to deepen, resulting in higher prices and a significant drag on business and consumer growth, and ultimately global growth. While growth appears healthy currently, we expect risk aversion to rise as the ability of developed markets and vulnerable emerging economies to weather the impact of trade wars remains uncertain. Additionally, emerging economies with sizeable dollar debts and sizable fiscal deficits may struggle. After more than two years of steadily rising interest rates, 2019 could mark the peak for U.S treasury yields for the current business cycle, however, the road ahead is likely to remain bumpy. We believe investors should focus on liquid markets segments with risk dialled down versus market benchmarks. The emerging market correction in 2018, could present some buying opportunities during 2019.

The commentary gives the views of the portfolio manager at the time of writing. Any forecasts or commentary included in this document are not guaranteed to occur.

Change in allocation of the fund over the quarter

Asset type	Q4 2018	Q3 2018	Change
Domestic Cash & Mny Mkt	1.77	-1.20	2.96
Foreign Cash & Mny Mkt	-0.48	2.26	-2.74
Foreign Equity	98.71	98.94	-0.22

The portfolio adhered to its portfolio objective over the quarter.

Fund classes

Class	Type	Price (cpu)	Units	NAV (Rand)
A	Retail	107.57	966,071.27	1,039,243.48
B1	Retail	107.85	14,292,135.27	15,414,192.68

All data as at 31 December 2018.

Units – amount of participatory interests (units) in issue in relevant class.

Important information update at 31 December 2018

Disclosures

Collective Investment Schemes in Securities (CIS) are generally medium to long term investments. The value of participatory interests may go down as well as up and past performance is not necessarily a guide to future performance. CIS are traded at ruling prices and can engage in borrowing and scrip lending.

The STANLIB MSCI World Index Feeder Fund is a portfolio of the STANLIB Collective Investment Scheme (the Scheme).

The manager of the Scheme is STANLIB Collective Investments (RF) (Pty) Limited (the Manager). The Manager is authorised in terms of the Collective Investment Schemes Control Act, No. 45 of 2002 (CISCA) to administer Collective Investment Schemes (CIS) in Securities. Liberty is a full member of the Association for Savings and Investments of South Africa (ASISA). The Manager is a member of the Liberty Group of Companies. The manager has a right to close a portfolio to new investors in order to manage the portfolio more efficiently in accordance with its mandate. The Manager does not provide any guarantee either with respect to the capital or the return of a CIS portfolio. A schedule of fees and charges and maximum commissions is available on request from the Manager.

The trustee of the Scheme is Standard Chartered Bank.

The investments of this portfolio are managed, on behalf of the Manager, by STANLIB Asset Management (Pty) Ltd, an authorised financial services provider (FSP), FSP No. 719, under the Financial Advisory and Intermediary Services Act (FAIS), Act No. 37 of 2002.

Prices are calculated and published on each working day, these prices are available on the Manager's website (www.stanlib.com) and in South African printed news media. This portfolio is valued at 17h00. Forward pricing is used. Investments and repurchases will receive the price of the same day if received prior to 15h00.

This portfolio is permitted to invest in foreign securities. Should the portfolio include any foreign securities these could expose the portfolio to any of the following risks: potential constraints on liquidity and the repatriation of funds; macroeconomic risks; political risks; foreign exchange risks; tax risks; settlement risks; and potential limitations on the availability of market information.

This portfolio is a Feeder Fund portfolio. A Feeder Fund portfolio is a portfolio that invests in a single portfolio of a collective investment scheme, that levies its own charges, which could result in a higher fee structure for the Feeder Fund.

All performance returns figures quoted are shown in ZAR and are based on data sourced from Morningstar or Statpro and are as at 31 December 2018.

Annualised return figures are the compound annualised growth rate (CAGR) calculated from the cumulative return for the period being measured. These annualised returns provide an indication of the annual return achieved over the period had an investment been held for the entire period. Actual annual figures are available on request from the Manager.

Portfolio performance figures are calculated for the relevant class of the portfolio, for a lump sum investment, on a NAV-NAV basis, with income reinvested on the ex-dividend date. Individual investor performance may differ due to initial fees, actual investment date, date of reinvestment of income and dividend withholding tax. Portfolio performance accounts for all costs that contribute to the calculation of the cost ratios quoted, all returns quoted are after these costs have been accounted for.

Statistics - Positive Months: the number of individual 1 month periods during the specified time period where the return was not negative; Max Gain: the maximum gain in a trough-to-peak incline before a new trough is attained, quoted as the percentage between the trough and the peak. It is an indicator of upside risk over a specified time period (quoted for all periods of 1 year or longer); Max Drawdown: the maximum loss in a peak-to-trough decline before a new peak is attained, quoted as the percentage between the peak and the trough. It is an indicator of downside risk over a specified time period (quoted for all periods of 1 year or longer, where blank no loss was experienced); Highest and Lowest: the highest and the lowest 1 year return (%) that occurred during the specified time period (quoted for all relevant classes launched 1 year or more prior to current month end date).

Additional information about this product including, but not limited to, brochures, application forms and annual or quarterly reports, can be obtained free of charge, from the Manager and from the Manager's website (www.stanlib.com).

Contact details

Manager

STANLIB Collective Investments (RF) (Pty) Limited
Reg. No. 1969/003468/07
17 Melrose Boulevard, Melrose Arch, 2196
Telephone: 0860 123 003
Email: fundfactsheets@stanlib.com
Website: www.stanlib.com

Trustee

Standard Chartered Bank
Reg. No. 2003/020177/10
5th Floor, 4 Sandown Valley Crescent, Sandton, 2196
Telephone: +27 (0)11 217 6600

Investment Manager

STANLIB Asset Management (Pty) Ltd
An authorised financial services provider, FSP No. 719
Reg. No. 1969/002753/07
17 Melrose Boulevard, Melrose Arch, 2196
Telephone: +27 (0)11 448 6000
Website: www.stanlib.com

STANLIB Index Investments team

Email: indexinvestments@stanlib.com
Website: www.stanlib.com/indexinvestments